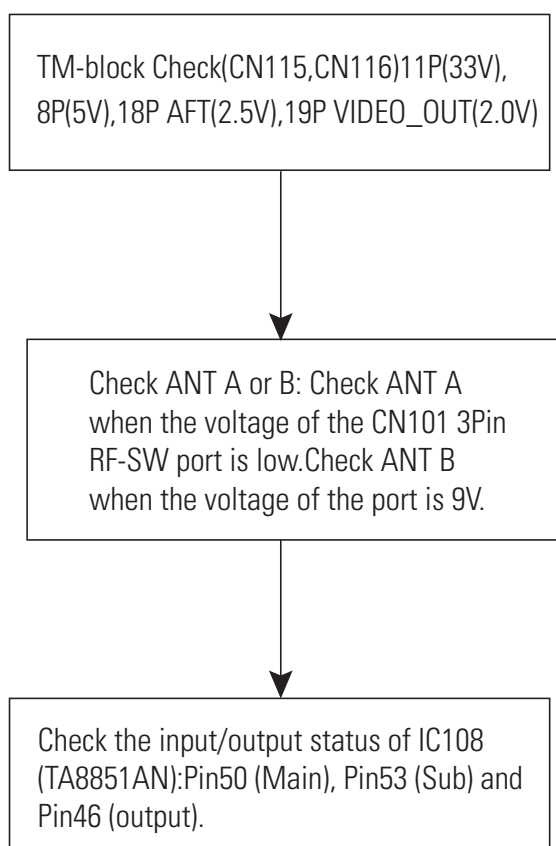
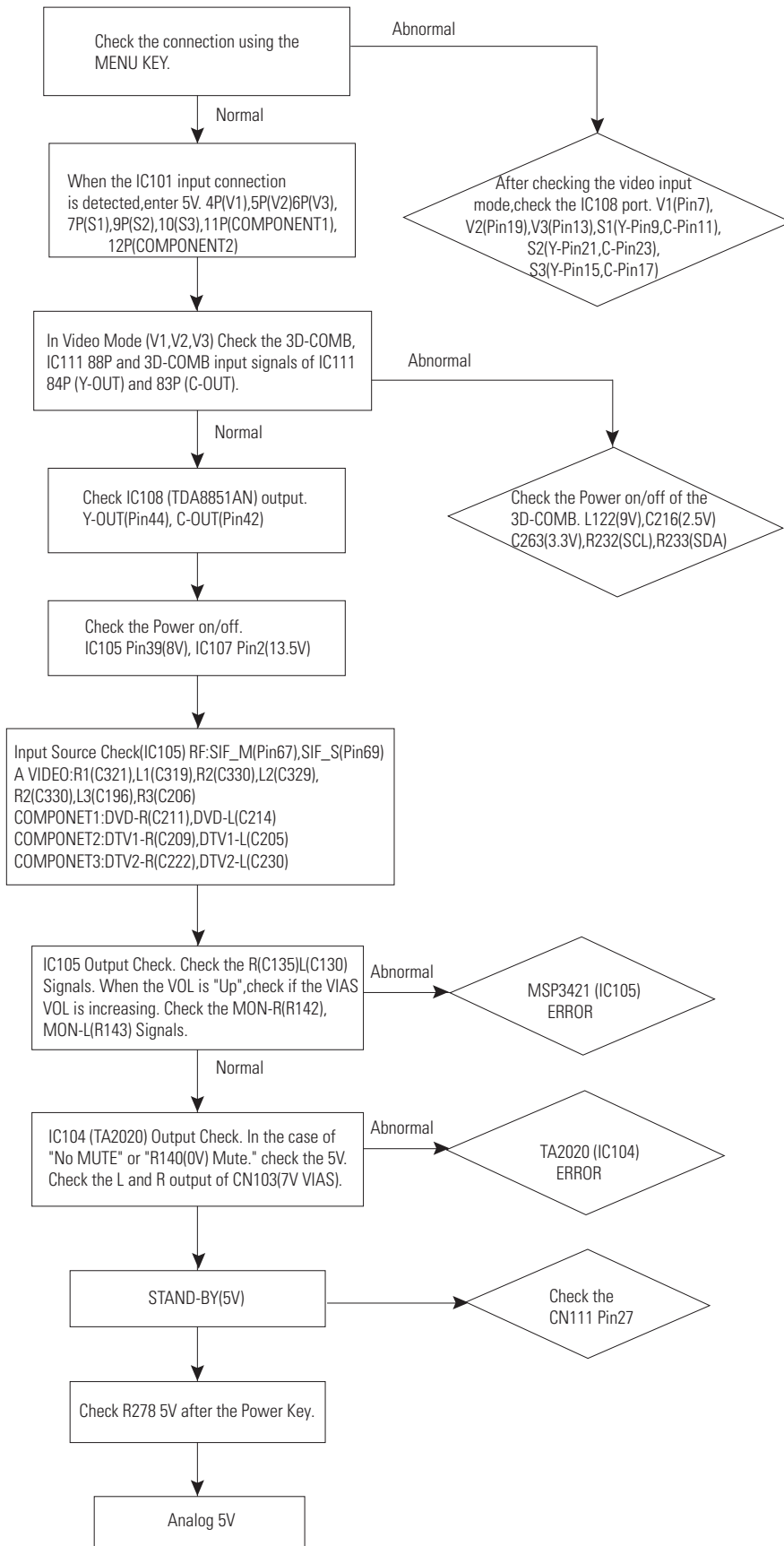

6. Operation Check & Troubleshooting for each PCB Board

6-1 Main Board Troubleshooting

6-1-1 No RF Signal

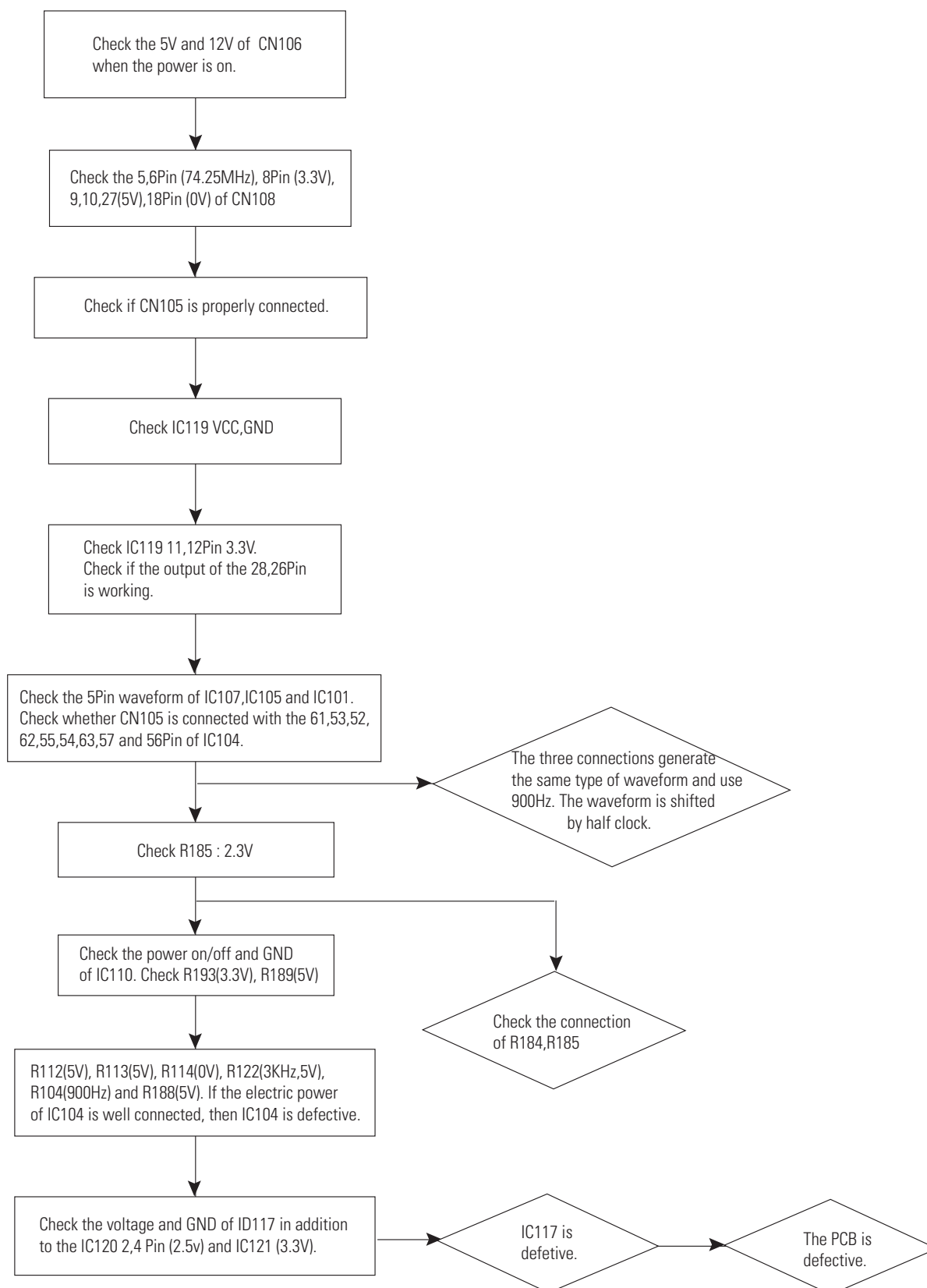


6-1-2 Video Signal Check

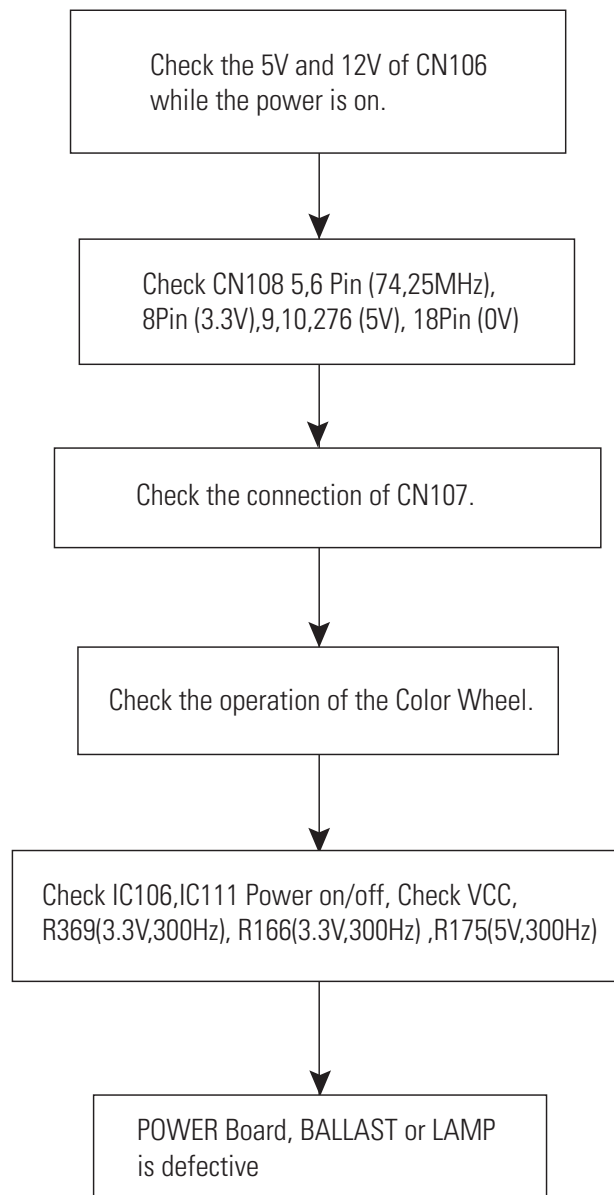


6-2 Drive Board Troubleshooting

6-2-1 When the Color Wheel is not working

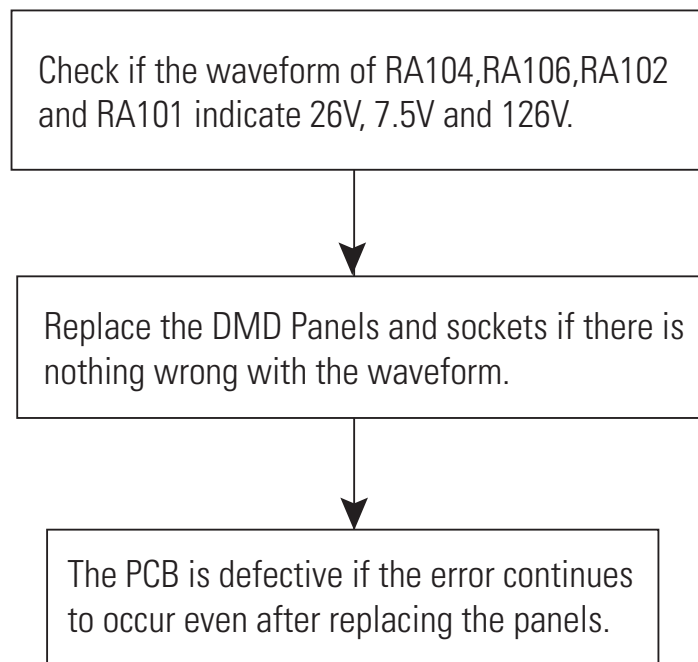


6-2-2 When the LAMP does not turn on

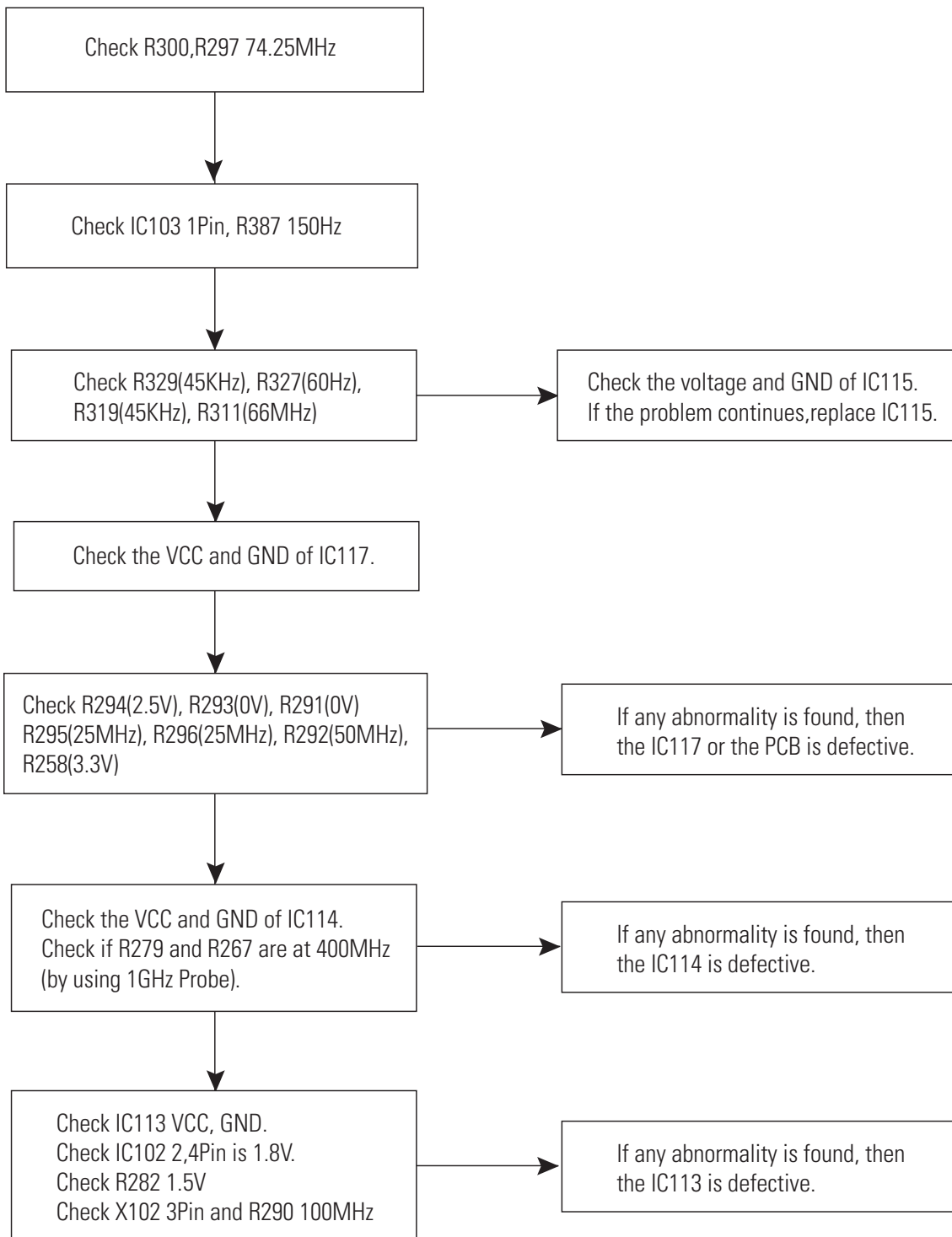


6-2-3 Check the images on the screen

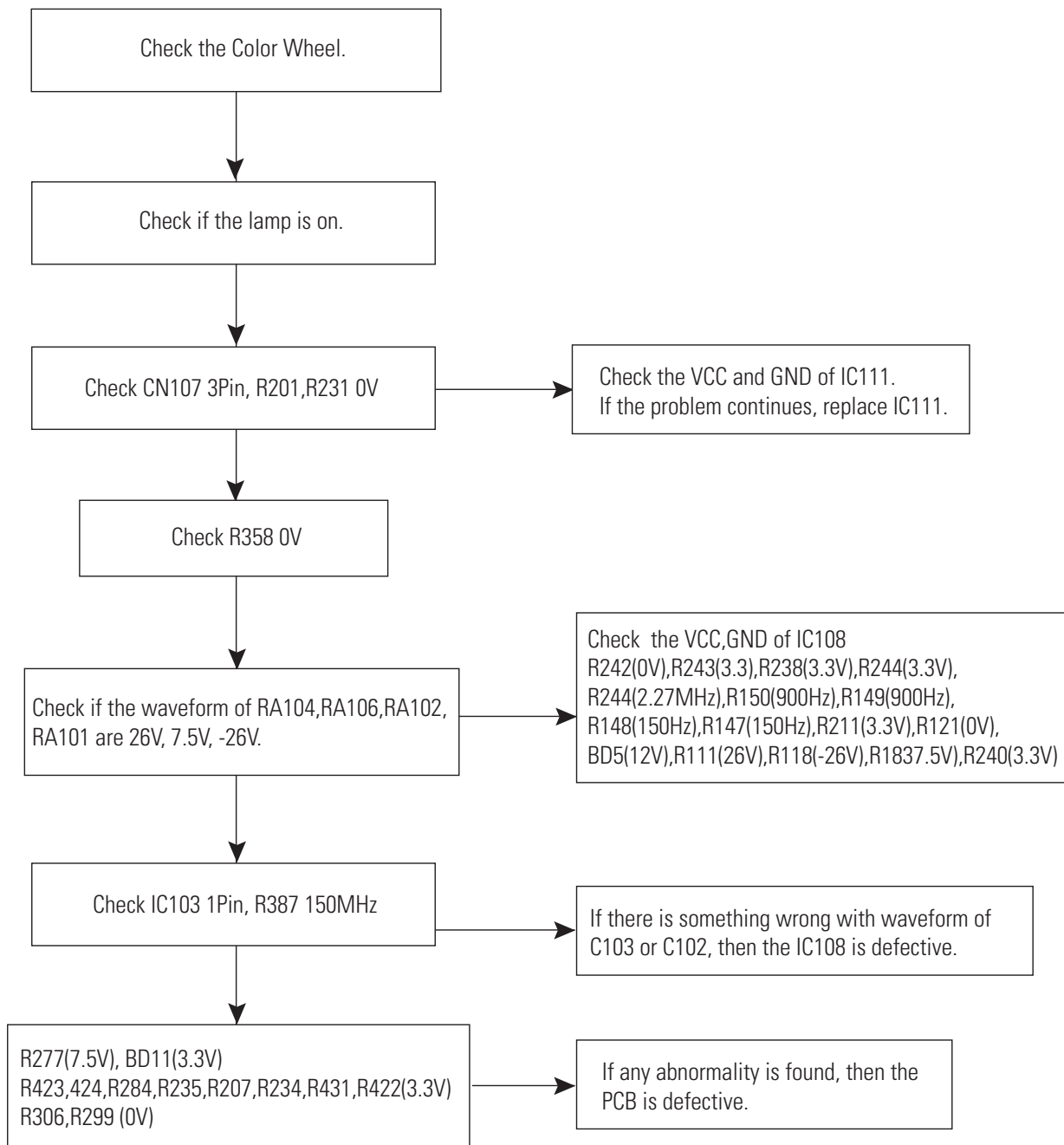
* When the One-sixteenth horizontal stripes:



* When the screen trembles or flickers:

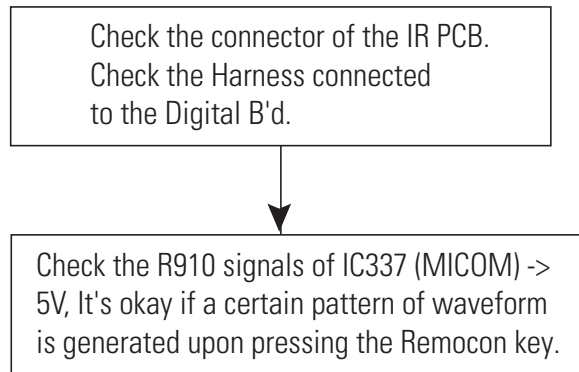


* When the screen does not appear:

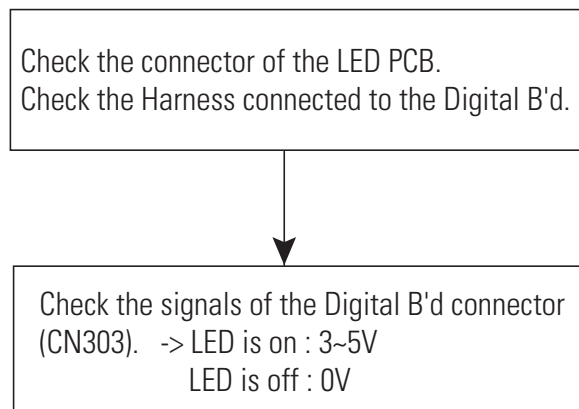


6-3 Digital Board Troubleshooting

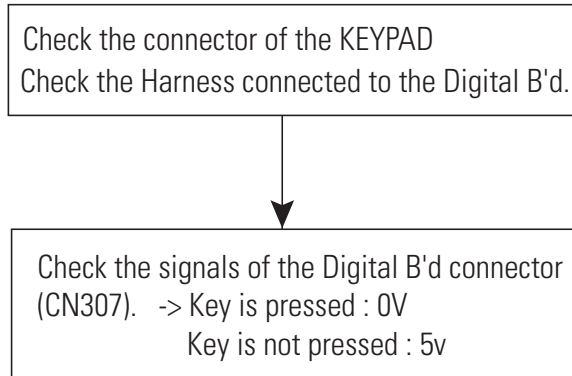
6-3-1 IR(Remocon) Signal Check



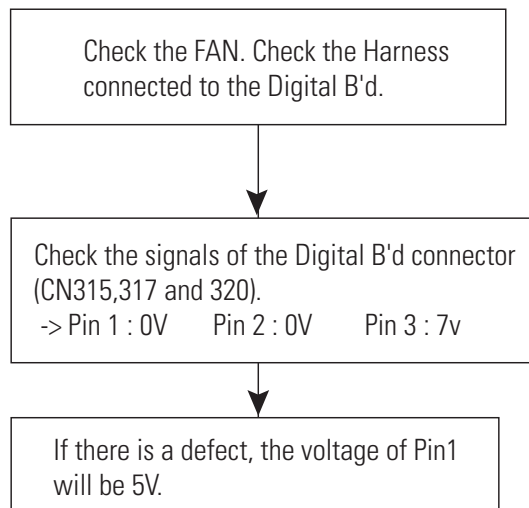
6-3-2 LED Signal Check



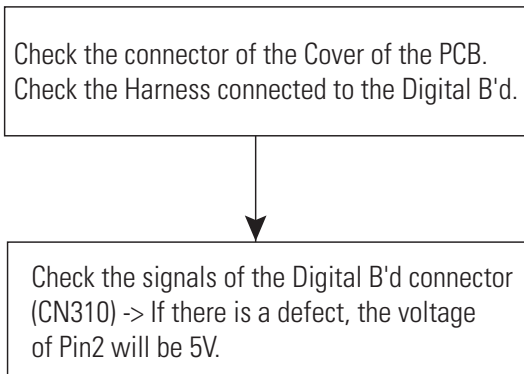
6-3-3 KEYPAD Signal Check



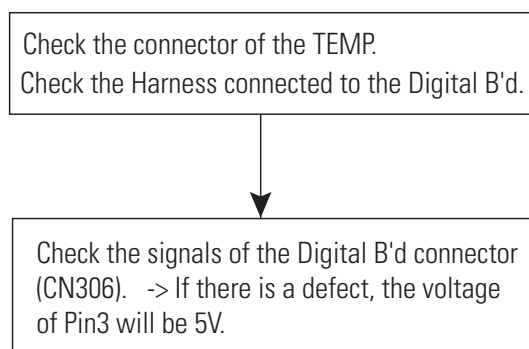
6-3-4 FAN_INT Signal Check



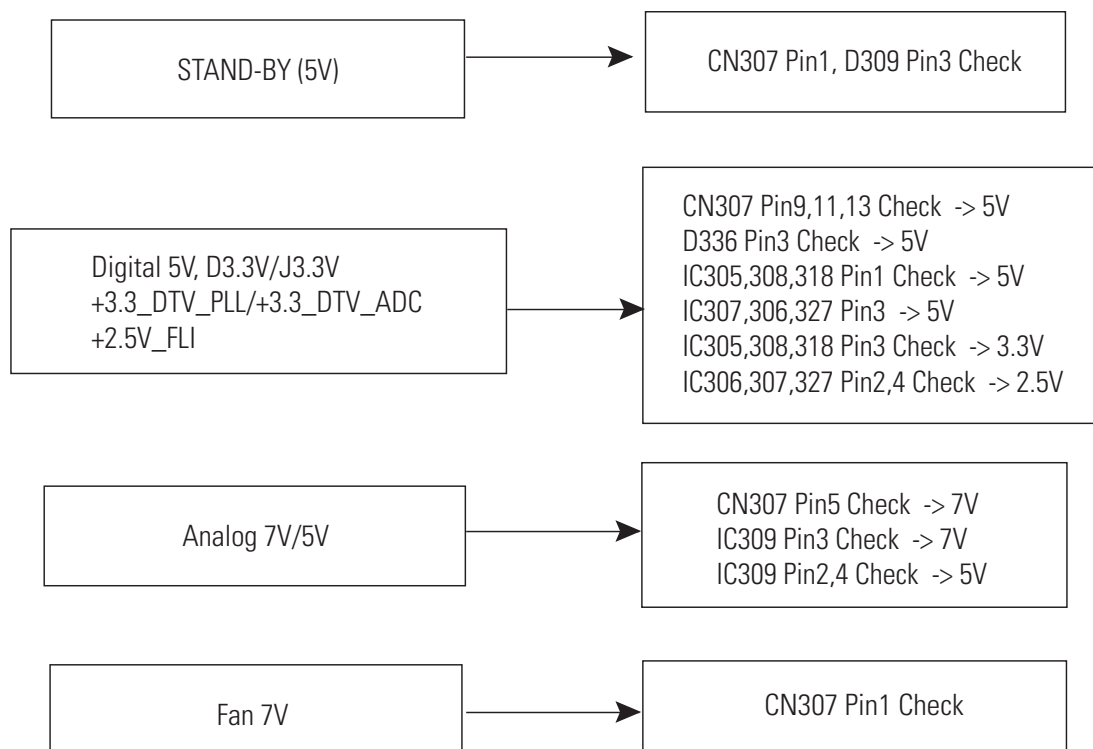
6-3-5 Cover_INT Signal Check



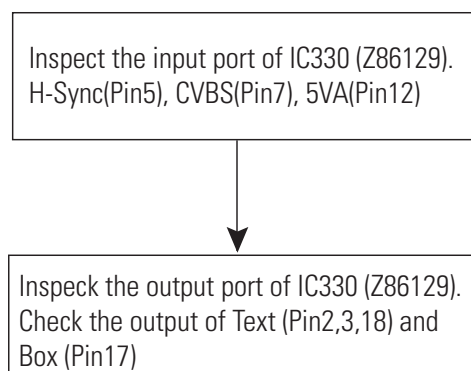
6-3-6 TEMP_INT Signal Check



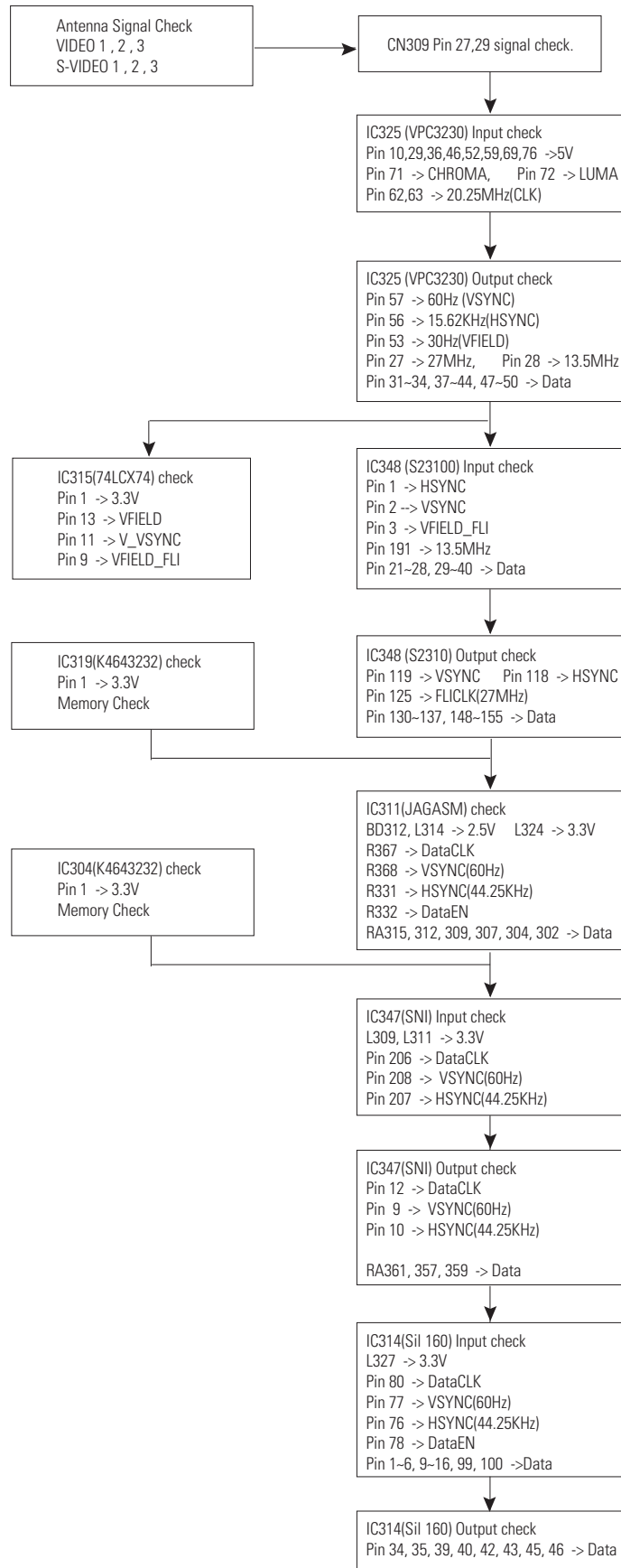
6-3-7 Power on/off Check



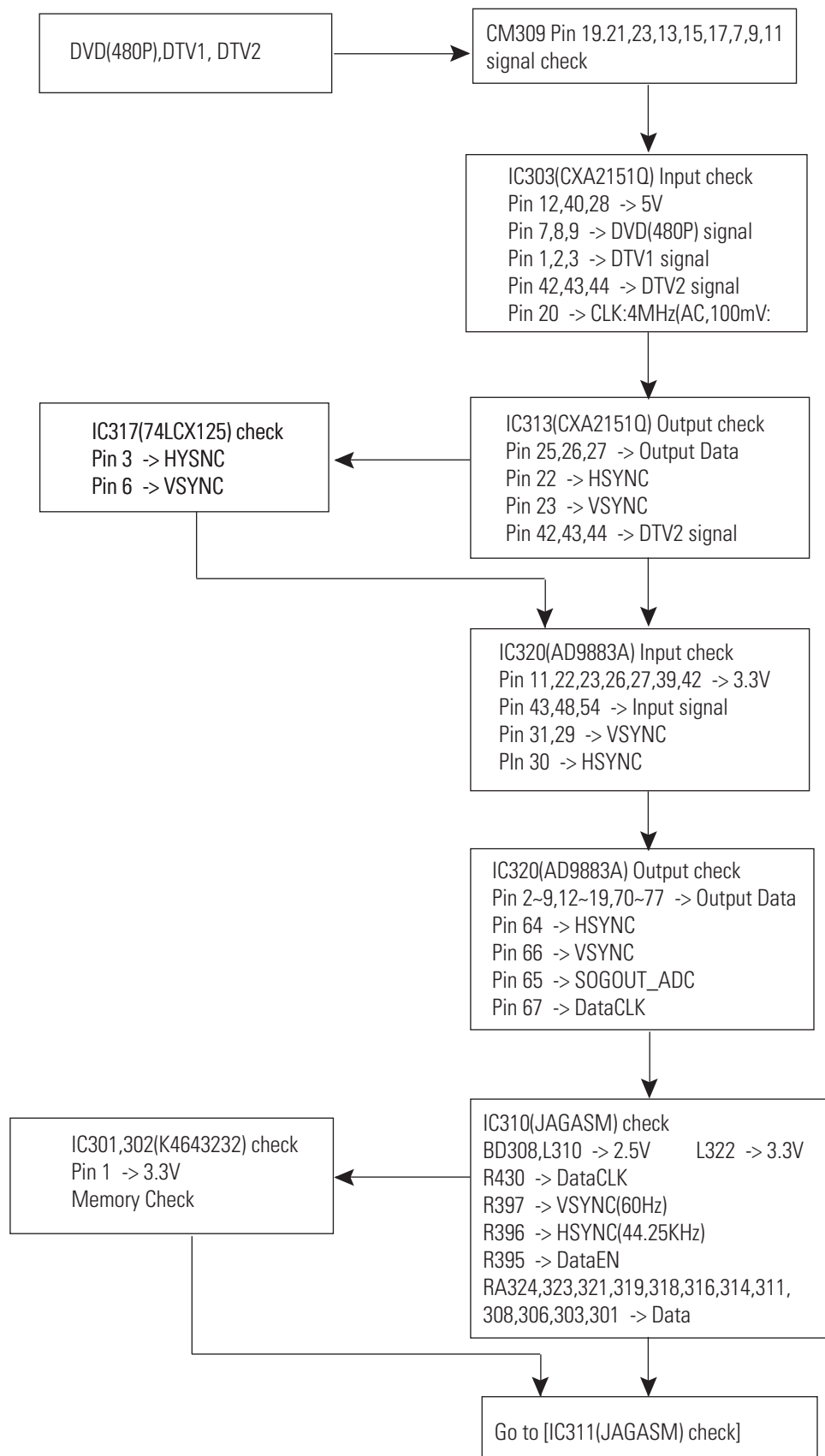
6-3-8 Caption Check



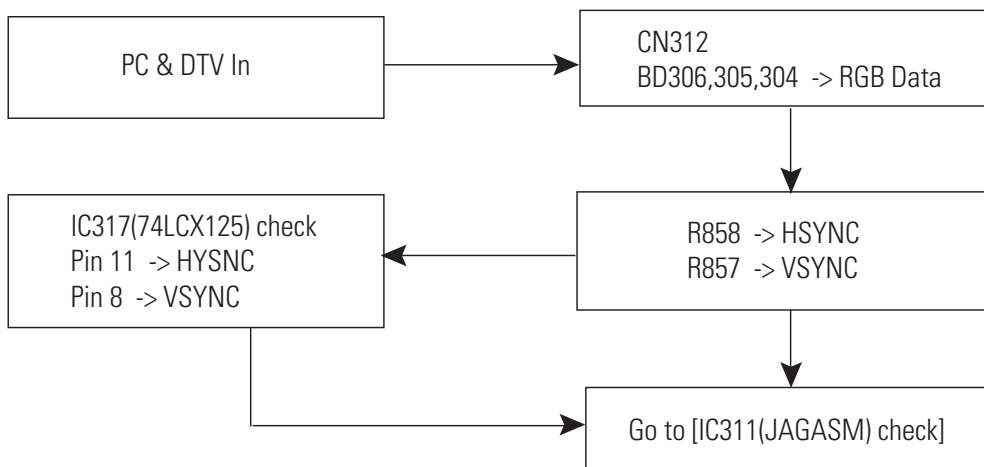
6-3-9 Antenna Signal Check



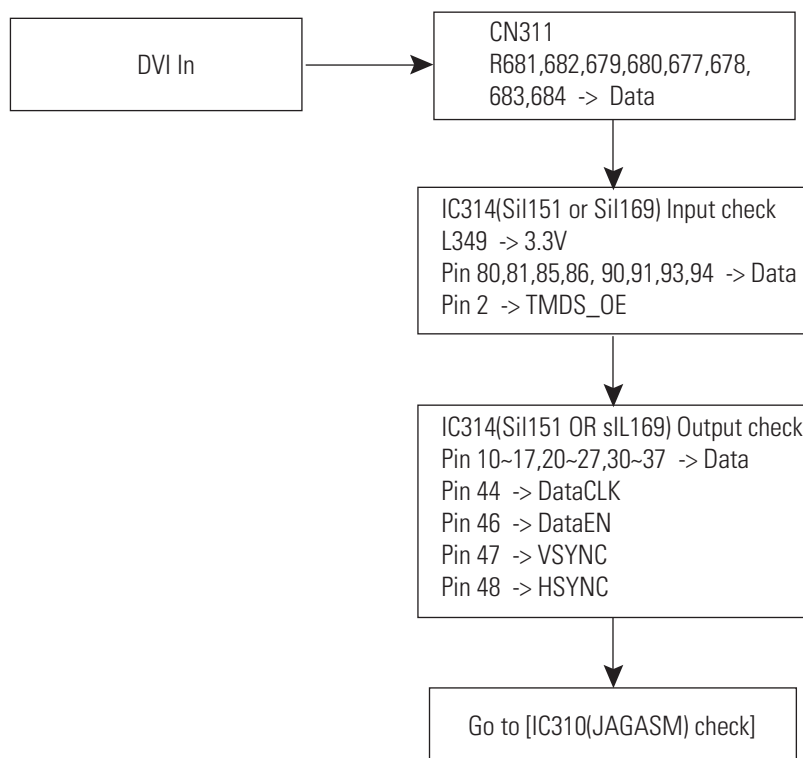
6-3-10 DVD(480P), DTV1, DTV2



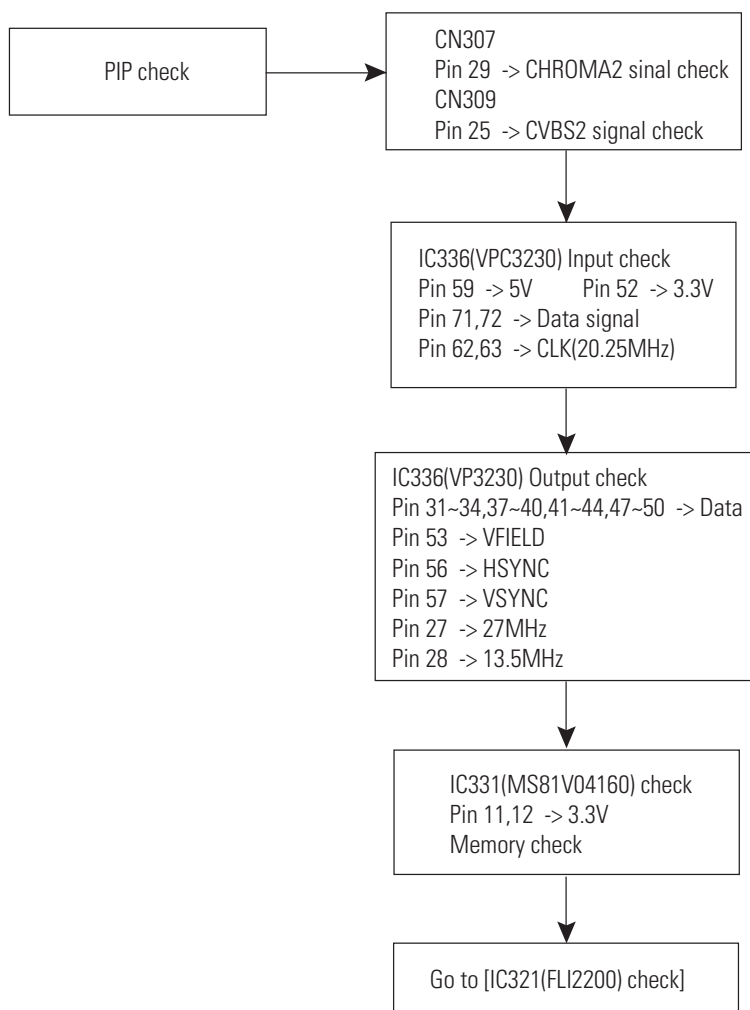
6-3-11 PC & DTV In



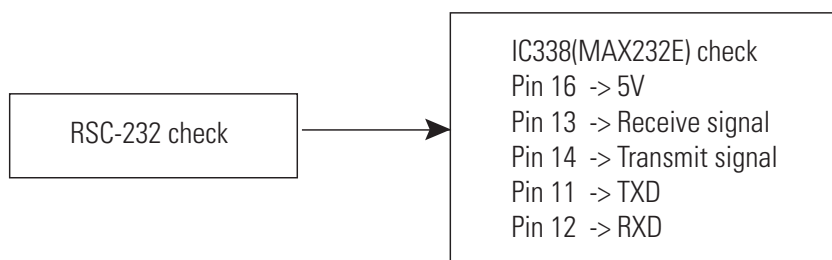
6-3-12 DVI In



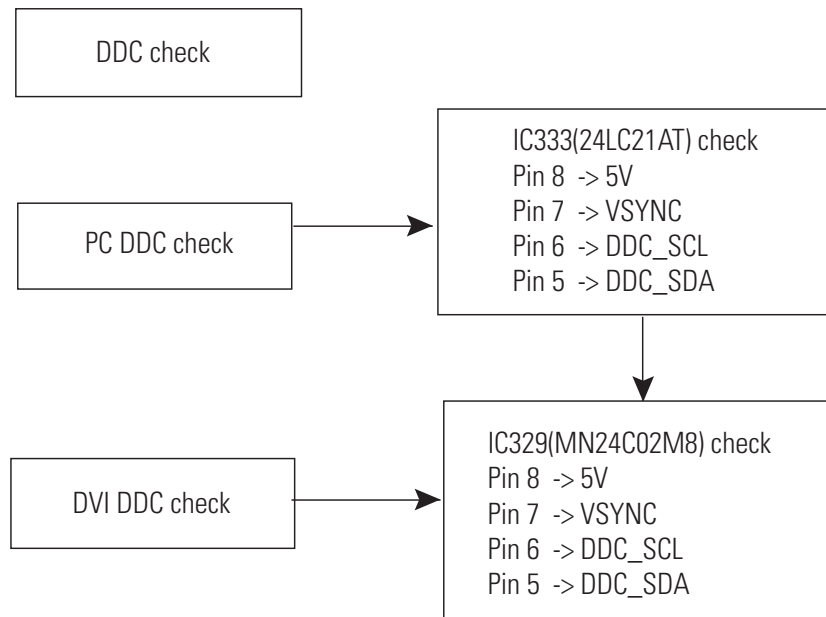
6-3-13 PIP check



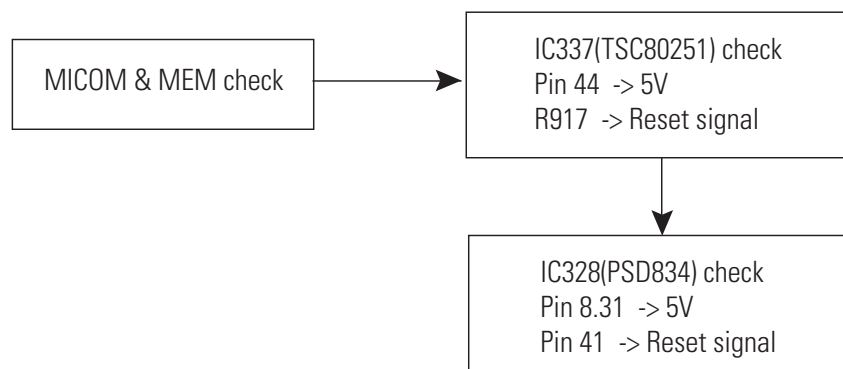
6-3-14 RSC-232 check



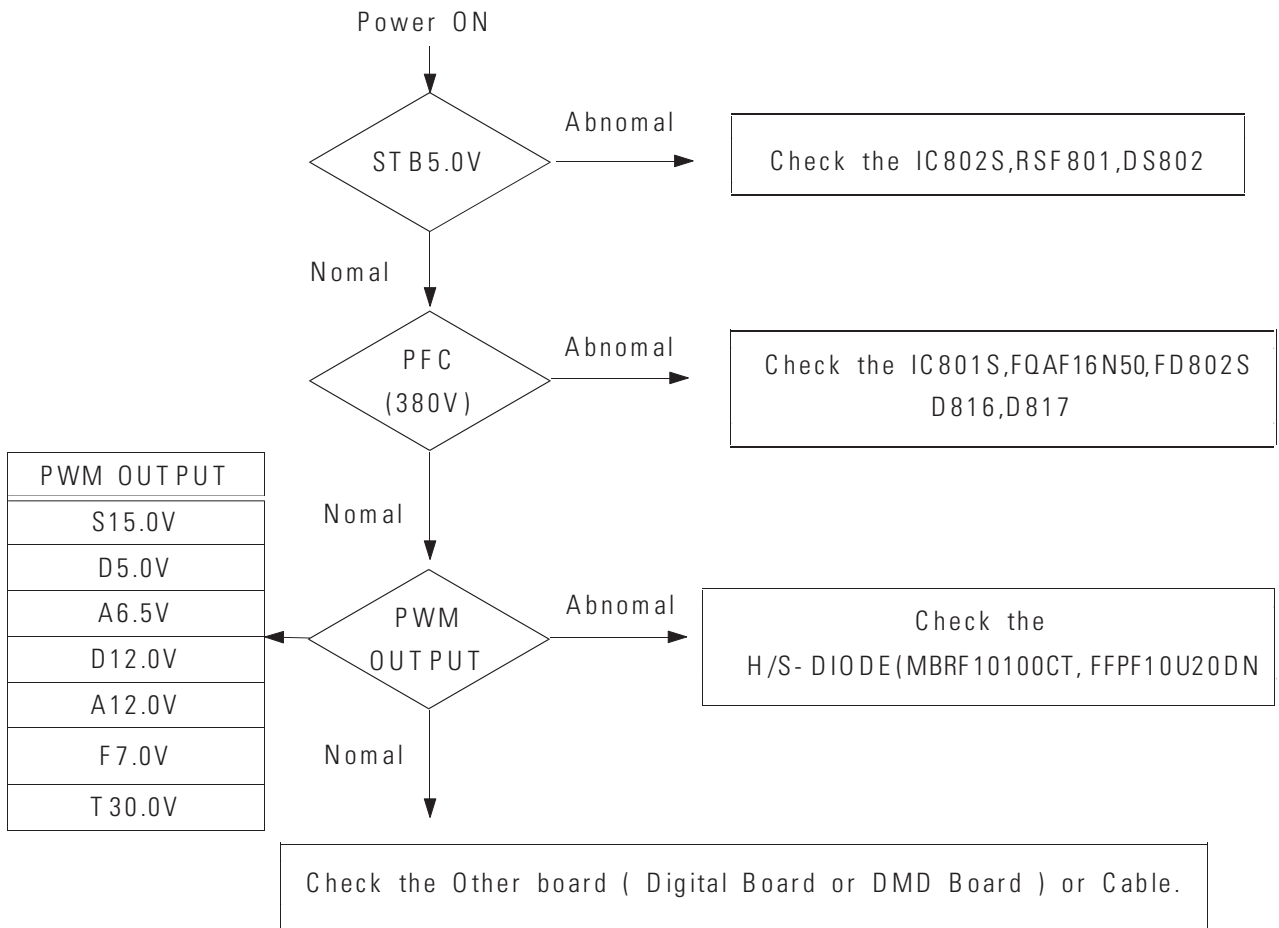
6-3-15 DDC check



6-4-16 MICOM & MEM check



6-4 Power Board Troubleshooting



MEMO